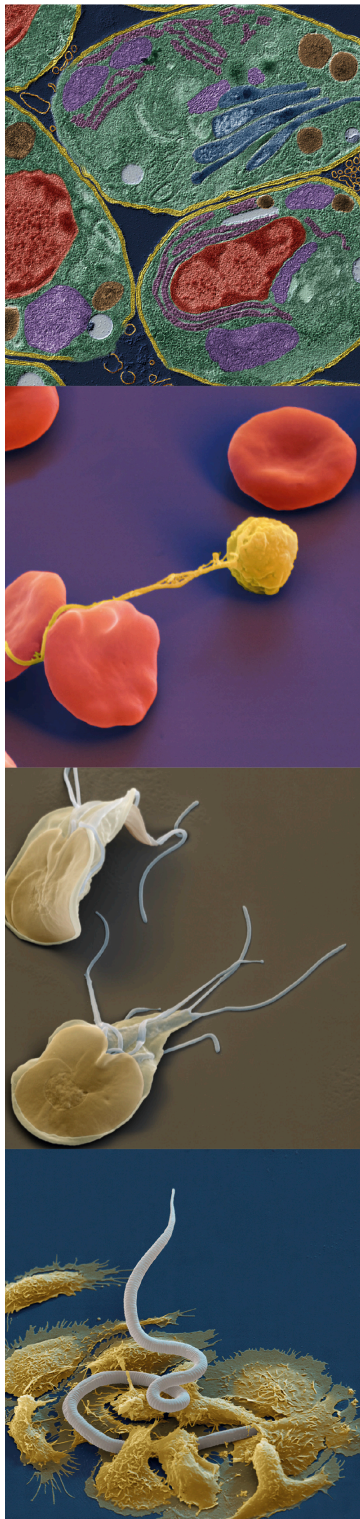


# Lecture Series GK2046

## Parasite Infections:

## Molecular, immunological and wildlife aspects

Monday, 6pm – Robert-von-Ostertag House, Room 042



**Introduction:** 12th October - R. Lucius, HU Berlin

General features of parasite infections

### Molecular Aspects:

- 19th October - E. Levashina, MPI-IB  
Malaria: insect immunity and vector-based intervention
- 26th October - N. Gupta, HU Berlin  
Dining in - Metabolic basis of obligate intracellular parasitism
- 2nd November - P. Seeberger, MPI-CI  
Parasite glycomics: recognition of parasite sugars by innate immune cells
- 16th November - J. Demeler, FU Berlin  
Anthelmintic resistance against macrocyclic lactones
- 23rd November - T. Aebischer, RKI  
Host cell metabolic stress responses to protozoan infections

### Immunological Aspects:

- 30th November - K. Matuschewski, HU Berlin  
Vaccine development against Plasmodium infection
- 7th December - F. Mockenhaupt, Charité Berlin  
Drug resistance development against Plasmodium falciparum
- 14th December - J.D. Schulzke, Charité Berlin  
Immune responses at intestinal barriers against Giardia duodenalis
- 4th January - S. Hartmann, FU Berlin  
Regulated immune responses in helminth infections
- 11th January - S. Rausch, FU Berlin  
Helminth coinfection and their immunological consequence

### Wildlife Aspects:

- 18th January - M. East, IZW Berlin  
Impact of helminth infections on free-ranging spotted hyenas **Place: IZW-Lecture Hall!**
- 25th January - E. Genersch, LIB Hohenneudorf  
Infectious diseases of honey bees and bumble bees
- 1st February - F. Seeber, RKI Berlin  
Wild rodents as models for protozoan parasite infections
- 8th February - B. Wachter / H. Hofer, IZW Berlin  
Parasite load and immune responses in Cheetah populations **Place: IZW-Lecture Hall!**
- 15th February - G. von Samson, FU Berlin  
Intestinal nematode communities of wild and domestic horses