

SFB1315 NEWSLETTER

Winter | Issue 1 | 2018/2019

Created by L De Mont, L.Pohl

#PAPERS

(PDF in Slack) *Efficacy of slow oscillatory-transcranial direct current stimulation on EEG and memory – contribution of an inter-individual factor*

(Link) *NLGN1 and NLGN2 in the prefrontal cortex: their role in memory consolidation and strengthening*

(Link) *Dreaming of a learning task is associated with enhanced memory consolidation: Replication in an overnight sleep study*

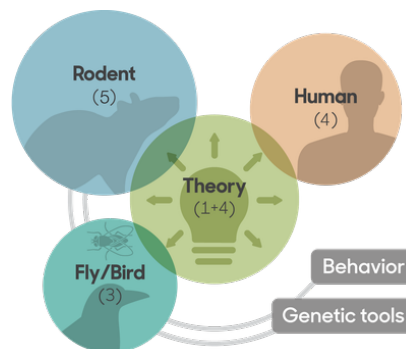
(Link) *A novel somatosensory spatial navigation system outside the hippocampal formation*

(Link) *Fast track to the neocortex: A memory engram in the posterior parietal cortex*

#GENERAL

official job advertisement for a data curator at the SFB

information on application for [Lange Nacht der Wissenschaften 2019](#)



#SOURCE_DATA

(Link) Google's new search engine for scientific datasets
First drafts and ideas for implementation of the planned connection with EMBOs SourceData

#TALKS_ CONFERENCES

(Link) *Columbia Workshop on Brain Circuits, Memory and Computation 2019* on 21-22. March.

(Link) *Mechanisms that shape vocal learning trajectories in songbirds* talk from Prof. Jon Sakata (Dept. Biology, McGill University) am 21.01.

The third Heidelberg Neuronal Ensemble Conference-HeiNEC 3-takes place on October 11/12, 2019 with leading experts on spatiotemporal activity patterns in neuronal networks and discussions of the nature of neuronal ensembles in different functional systems.

#PHD_POSTDOC

First meeting in the BCCN lecture hall, on 22.01 with short introduction of all projects through PhDs/Postdocs

The PhD-Postdocs meeting is being planned for every last Tuesday of the month.

For each meeting, three people present their own research in a format of 15 min presentation + 10 min discussion.



#GENDER

(Link) How female scientists confront gender bias in the workplace

(Link) Collection of resources regarding gender equality in research

(Link) University of Michigan ADVANCE program

(Link) Autobiography of Ben Barres, neuroscientist and transgender

Statement of Benjamin Judkewitz on the moral (and logical) aspects of gender equality → interesting discussion in the thread

(Link) How one conference embraced diversity

Link) Research: United States National Postdoc Survey results and the interaction of gender, career choice and mentor impact (

WiNS Adlershof Workshops for female PhD students and postdoctoral fellows of natural sciences: More Information [here](#)

Registration by e-mail to: petra.metz@hu-berlin.de

Next Workshops:

21 March 2019, 9-16 Time- and self-management for researchers

11 April 2019, 9-15 Research Data Management

16+17 May 2019, 9-17 and 9-13 Extend your career options in- and outside academia

Interesting video about **Unconscious**

Bias in Recruitment:

<https://vimeo.com/191134397>

After a meeting with DFG coordinators a soon to be launched [platform](#) on gender and equal opportunity of DFG-funded projects was presented.

It was decided that MaryLu will propose, among other gender measures, Clarissa's workshop or training on recruitment bias awareness, and reference letter writing.

The following graphic and the table (right) can be used to mark our progress in recruiting and increasing the number of women in the SFB,

Funded + Associates	Women (#)	Men (#)	Total	Women (%)	Men (%)
SHKs TAs RAs	10	5	15	66.67	33.33
PhDs	13	9	22	59.09	40.91
Postdocs	13	13	26	50.00	50.00
Pls	7	15	22	31.82	68.18
Steering Committee	2	6	8	25.00	75.00

Gender ratio of SFB-funded and associate members

Last update: 21 March 2019

